

CLEP EXAMS QUICK GUIDE

The College-Level Examination Program (CLEP) allows students to demonstrate college-level achievement in undergraduate courses and earn college credit.



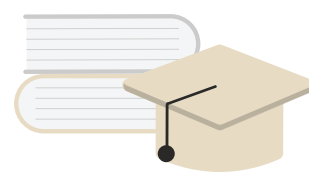
SUBJECT AREAS

Composition and Literature, World Languages, History and Social Sciences, Science and Mathematics, and Business.



LENGTH & FORMAT

90 minutes long with mostly multiple-choice questions. The College Composition exam is 120 minutes long with multiple choice and 2 essay portions.



COLLEGE CREDIT

View **CLEP Scores and University Course Equivalents** to see the number of credits you can earn.

REGISTRATION & PAYMENT

You'll need to register and pay for the exam with both College Board and the FSU Testing Center. Note that all payments are nonrefundable and nontransferable.

1. REGISTER WITH COLLEGE BOARD.

Go to College Board's **registration page** to register and pay for your exam. The exam fee is \$93 for the 2023-2024 school year (7/1/23 - 6/30/24).

2. REGISTER WITH FSU.

Go to the **Exam Registration System** to select a date and time for your exam. In addition to the College Board fee, students must pay an FSU proctoring fee.

FSU STUDENTS | Pay a proctoring fee of \$12 with **FSUCash only** upon arrival at the Testing Center.

NON-FSU TESTERS | Pay a proctoring fee of \$15.50 through FSU's **RegisterBlast system**.

BEFORE YOU GO

To ensure you have a smooth testing experience, review **Testing Tips & Policies** prior to arrival at our facility.

WHAT TO BRING

APPROVAL LETTER

If you're taking a Math or College Composition (with essay) exam, you must bring a letter of approval from the Undergraduate Studies dean to receive credit. Request the letter at least 1 business day before your exam date by emailing **undergradstudies@fsu.edu**.

CONFIRMATION ITEMS

Bring the registration ticket provided by CLEP and your appointment confirmation email.

FINANCIAL ASSISTANCE

TEST PREP & VOUCHERS

Review the Modern States **Freshman Year for Free** program, which offers free CLEP preparation courses and exam vouchers.

MILITARY BENEFITS

Learn about **fee waivers** and **review criteria** to see if you're eligible.

Need accommodated testing?

Visit our **webpage** for assistance.

Questions about CLEP?

Visit the **College Board website** to learn about test preparation, study guides, exam waivers, score reports, and retakes.

FSU Testing Center

850-644-3017

testing@fsu.edu

Hours: M-F, 8:30am-5:00pm

Directions & Parking